



**COLTRI SUB EVO 60
ELECTRONIC**

**COLTRI SUB EVO 30
ELECTRONIC**

USER MANUAL

COLTRI SUB
www.coltrisub.it
AEROTECNICA COLTRI S.p.A.

AEROTECNICA COLTRI S.p.A.
via Colli Storici 177 25010 San Martino della Battaglia
BRESCIA - ITALY
Tel: +39 030 99 103 01 +39 030 99 102 97
Fax: +39 030 99 10 283
www.aerotecnicacoltri.it coltrisub@coltrisub.it

INSTRUCTIONS

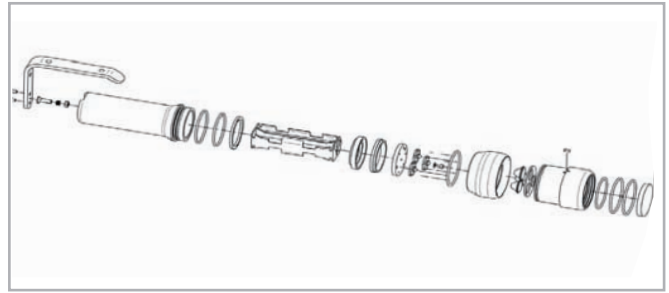
ON-OFF Rotate the front bezel clock-wise to switch it on

BATTERY REPLACEMENT

- Unscrew the front part of the lantern
- Replace the used batteries with fully charged ones (loss the used batteries in pertinent disposers)
- Control the efficiency and cleanliness of the impermeable O-rings
- Firmly screw all parts back on

TRASPORTATION

- Always transport the Scuba Light inside its original casing
- If transported on an airplane, remove the batteries or disconnect the battery module from the main unit.



MAINTENANCE

BEFORE EACH USE

- Control the battery charge
- Replace or recharge the batteries if discharged
- Control the O-rings functionality

AFTER EACH USE

- Wash the lantern using fresh water
- Carefully dry it off
- Remove the batteries in case the lantern will not be used for an extended period of time

O-RINGS

- Always keep the O-rings clean and lubricated with silylconic grease. If damaged, replace them with new rings with the exact same specifications.

Technical specifications

- Led Cree
- Magnetic switch
- Switching generator
- 6 mm tempered optic crystal
- Anti-corrosive anodized aluminium body
- n°5 impermeable O-rings
- Ergonomic handle
- 20 ATM control pressure

Technical data

- Power supply: 8 AA disposable batteries (included)
8 AA rechargeable batteries (not included)
- N° 3 efficiency Led Cree
- Lifetime
- Color temperature 8000° K

WARRANTY ACTIVATION

All of our Scuba Light products have a 24-month warranty from the date of its purchase. Before leaving our production plant, the possibility of flooding after battery replacement, if followed as instructed, is completely eliminated by submitting each of our products to a series of tests in order to ensure the process is absolutely fault-free.

The Scuba Light lose the warranty if:

- If the product has been repaired or modified by non-authorized personnel.
- If the product has been damaged due to improper use by the owner.
- If the Serial Number on the product has been altered.

The WARRANTY is voided for the following scenario

You may activate your 24-months warranty period by sending an e-mail to: coltrisub@coltrisub.it stating the date of purchase and the Serial Number of your product. You may also include an assessment regarding your product along with the e-mail if you would like to do so.

All the personal information you send to us will not to be sent nor used by third-parties. It will be introduced into our database according to the 675/92 Privacy Law.

COLTRI SUB EVO 60 ELECTRONIC



Dimensions :
2.6" max diameter
7.7" lenght

Power: 9 W

Lamps: n° 3 Led 3 W Cree

Equivalent power: 60 W

Color temperature: 8.000° K

Glass: Temperate optical glass concave / convex 6 mm

Real weight: 749 gr

Battery range: 3 h

Batteries: n° 8 alkaline batteries stilo AA/R6 1,5 V. Max power also with recharge batteries.

Body material: Anodized aluminium alloy.

Maximun operation depth: 200 m



COLTRI SUB EVO 30 ELECTRONIC



Dimensions :
2.6" max diameter
6" lenght

Power: 3 W

Lamps: n° 3 Led 1 W Cree

Equivalent power: 30 W

Color temperature: 8.000° K

Glass: Temperate optical glass concave / convex 6 mm

Real weight: 615 gr

Battery range: 3 h

Batteries: n° 4 alkaline batteries stilo AA/R6 1,5 V. Max power also with recharge batteries.

Body material: Anodized aluminium alloy

Maximun operation depth: 200 m

